

Engineering

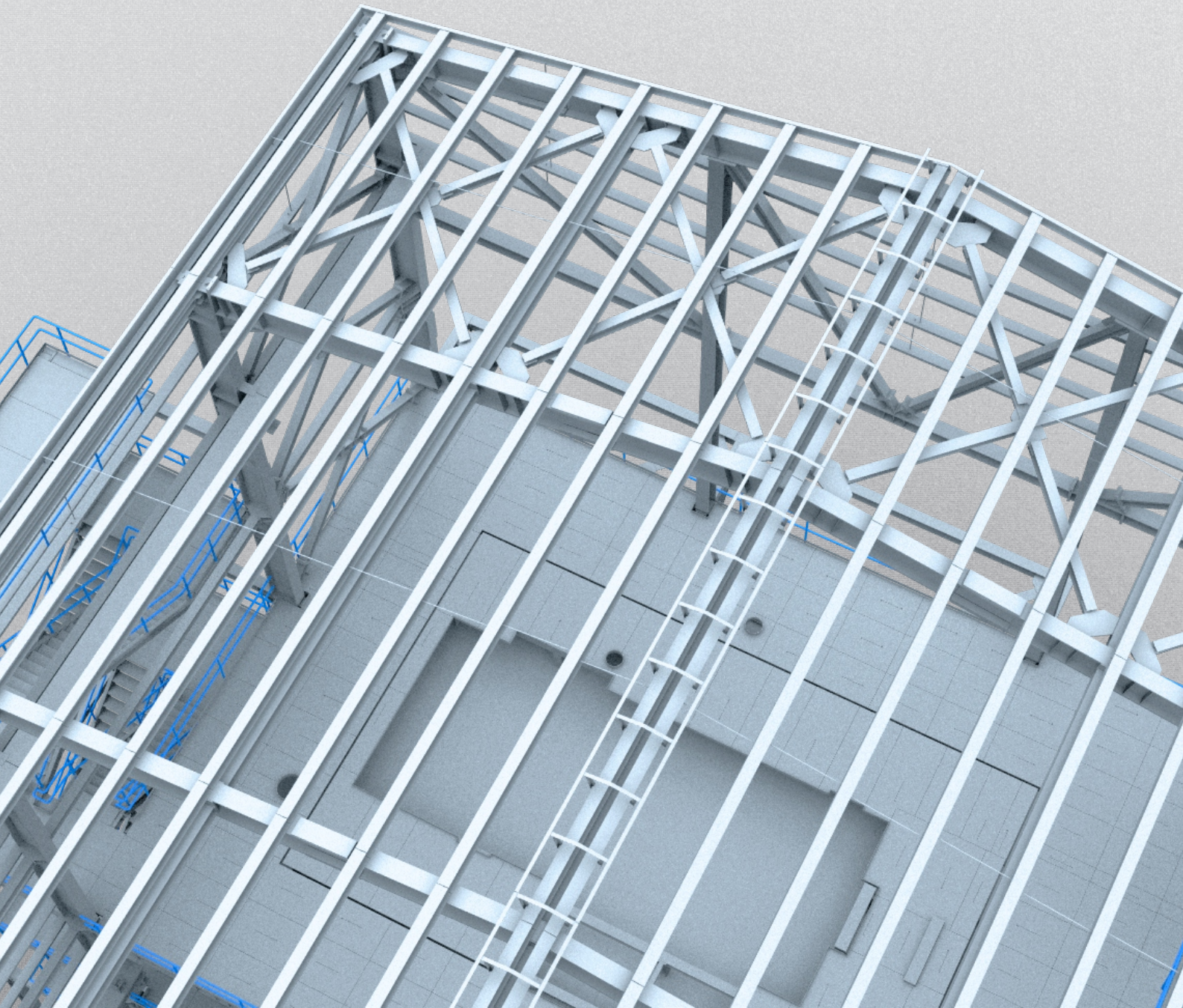


# TECHNICAL CAPABILITIES

ON THE DESIGN, MODELING  
DETAILING & DOCUMENT MANAGEMENT  
OF STRUCTURAL STEEL WORKS

الهاجري  
AL HAJIRY

[www.alhajiry.com](http://www.alhajiry.com)

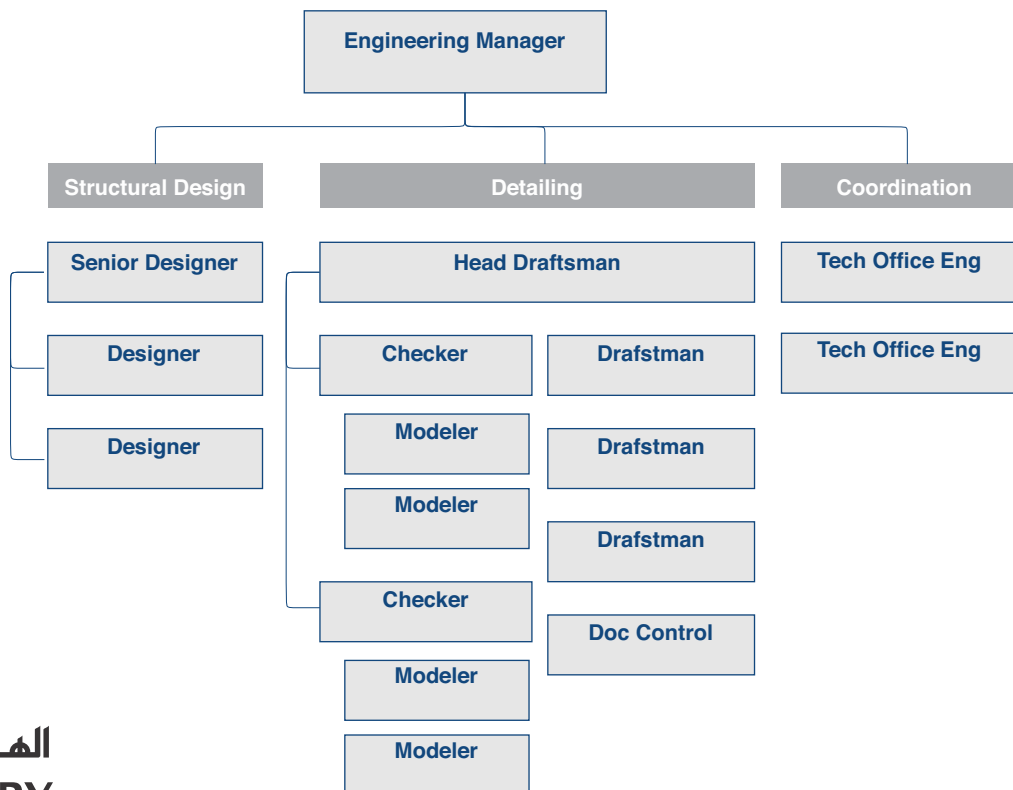


“ We possess a reputation for innovative ideas and seamless solution expertise in all aspects of Structural Steel Design, Fabrication & Erection.

Our staff are among the industry's finest team of Professional Engineers. We achieve our deadline by ensuring that we understand the wider Client goals and that we work internally with all members of our team to make it happen.

Our Staff throughout the company are involved in continuous research and development of the future of Engineering models in addition to their day-to-day design jobs. ”

## Our Engineering Team



# Structural Design and Detailing Facility

Al Hajiry's Engineering Service includes Structural Design, Detailing, Preparation of Shop & Erection drawings and Quantity Take off. The team is more than capable of handling any kind of complicated projects and can provide the most suitable output as per our Clients needs.

We utilizes design and engineering softwares that can provide accurate analysis and details related to the entire structure . These applications supports various architectural approaches, accommodate further revisions and significantly reduce the time spent for both detailing and design.

**STAAD Pro**

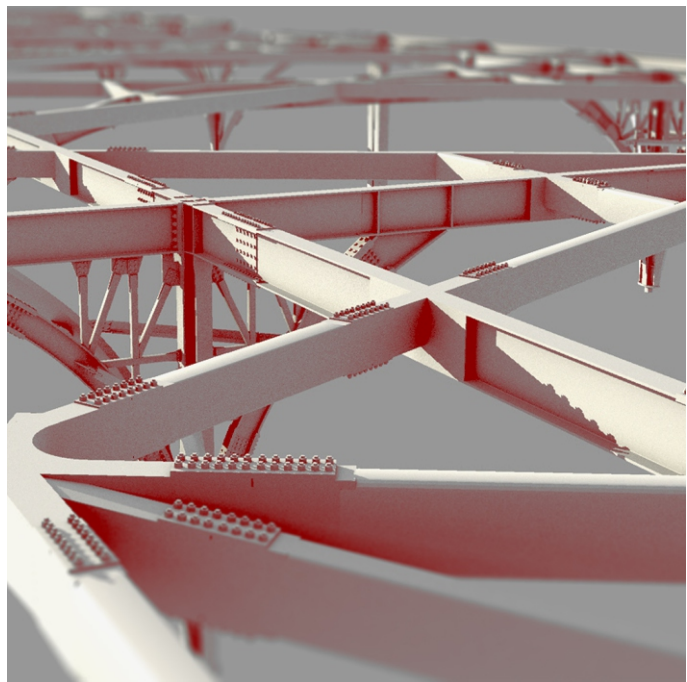
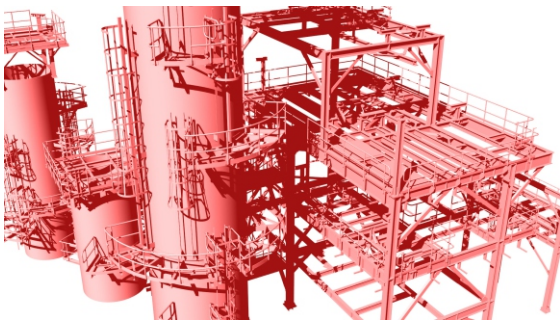
**TEKLA Structures**

**AUTOCAD**

**For Structural Design**

**For Modeling/Detailing**

**For Drafting**





# Structural Design Practices

Our Design practices are in line with the International Standards & Codes

<b>BS</b>	British Standard (BS6399-Loading Code & BS 5950-Design Code)
<b>AISC</b>	American Institute of Steel Construction
<b>AISI</b>	American Iron and Steel Institute
<b>ASTM</b>	American Society for Testing Materials
<b>AWS</b>	American Welding Society
<b>ASME</b>	American Society for Mechanical Engineers
<b>SSPC</b>	Structural Steel Painting Council
<b>UBC</b>	Uniform Building Code
<b>DIN</b>	German Standard
<b>JIS</b>	Japanese Standard

الهاجري  
AL HAJIRY

[www.alhajiry.com](http://www.alhajiry.com)

