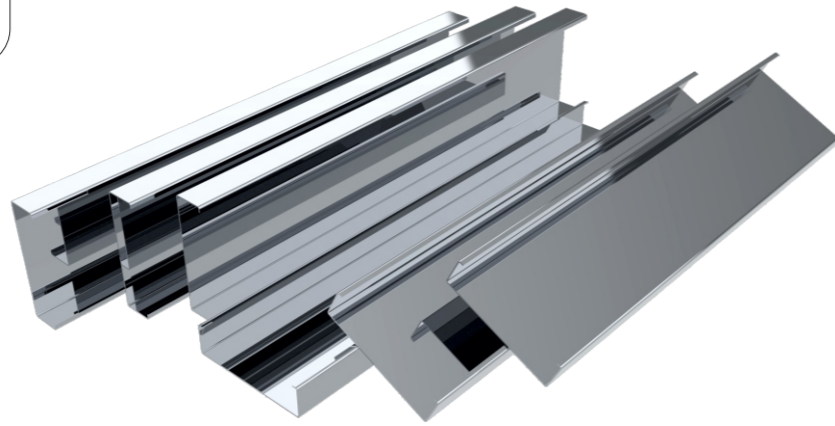
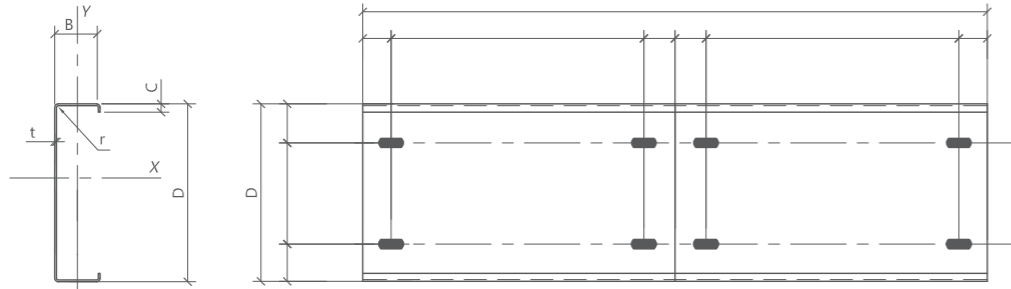


AM C 142-302®



Design Information

Note: Length, hole, pitch shall be as per Client shop drawings



PURLIN SECTIONAL PROPERTIES AND ALLOWABLES

Section	NOMINAL DIMENSIONS				SECTION PROPERTIES									
	Depth D mm	Top Flange B mm	Bottom Flange B mm	Thickness t mm	C mm	Wt / m kg	Area cm ²	I xx cm ²	I yy cm ²	R xx cm	R yy cm ²	Mx kN-m	My kN-m	
142C15	142	55	55	1.5	15	3.2	4.1	125.2	17.5	5.5	2.1	3.7	1.0	
142C18	142	55	55	1.8	15	3.9	4.9	149.3	20.9	5.5	2.1	2.6	1.2	
142C20	142	55	55	2.0	15	4.3	5.5	165.1	23.2	5.5	2.1	5.0	1.3	
142C25	142	55	55	2.5	15	5.4	6.8	204.0	28.8	5.5	2.1	6.1	1.6	
182C15	182	55	55	1.5	15	3.6	4.6	219.1	17.1	6.9	1.9	5.1	1.0	
182C18	182	55	55	1.8	15	4.3	5.5	261.8	20.5	6.9	1.9	6.3	1.2	
182C20	182	55	55	2.0	15	4.8	6.1	290.1	22.8	6.9	1.9	7.0	1.4	
182C25	182	55	55	2.5	15	6.0	7.6	359.8	28.4	6.9	1.9	8.6	1.6	
202C15	202	60	60	1.5	15	3.9	5.0	294.1	21.2	7.7	2.1	6.0	1.2	
202C18	202	60	60	1.8	15	4.7	6.0	315.6	25.5	7.7	2.1	7.4	1.4	
202C20	202	60	60	2.0	15	5.2	6.7	389.7	28.3	7.7	2.1	8.4	1.6	
202C25	202	60	60	2.5	15	6.5	8.3	484.1	35.4	7.6	2.1	10.5	1.9	
232C15	232	70	70	1.5	15	4.5	5.8	452.6	33.3	8.9	2.4	7.0	1.5	
232C18	232	70	70	1.8	15	5.4	6.9	541.4	40.0	8.8	2.4	9.1	1.8	
232C20	232	70	70	2.0	15	6.1	7.7	600.3	44.5	8.8	2.4	10.2	2.0	
252C15	252	70	70	1.5	15	4.8	6.1	551.0	34.1	9.5	2.4	7.6	1.5	
302C18	302	90	90	1.8	15	7.0	8.9	1,181.8	81.0	11.5	3.0	12.0	2.8	
302C20	302	90	90	2.0	15	7.8	9.9	1,311.2	90.1	11.5	3.0	14.3	3.0	
302C25	302	90	90	2.5	15	9.7	12.4	1,633.0	112.9	11.5	3.0	20.1	3.7	

Product

Trims and Accessories

Specification

Top Skin Sheet / Liner Sheet			Surface Coating	
Aluminium	GI	Alu Zinc	Weather-Side	Reverse-Side
0.4mm - 0.9mm thickness A3105/A3003 as per Client Project Specification	0.28mm - 0.70mm or 29gauge - 21 gauge as per Client Project Specification ASTM A653 or other equivalent standards like JIS 3302 , EN10326 / 10327, IS 277either Zinc Coating G40 120gms/m ² G60 180gms/m ² G90 275gms/m ²	0.4mm - 0.9mm thickness as per Client Project Specification ASTM A792 with Coating AZ60-AZ180	Polyester top-coat 20 micron over 5 micron of nominal epoxy primer PVDF, Plastisol, ARS shall be applied as per Client Project Specification Top coat color "RAL 9002" or as per Client Sepcified RAL Color	Epoxy Primer 5 - 7 microns Other coating shall be applied as per Client Project Specification Prime coat color "RAL 7035" or as per Client Sepcified RAL Color

